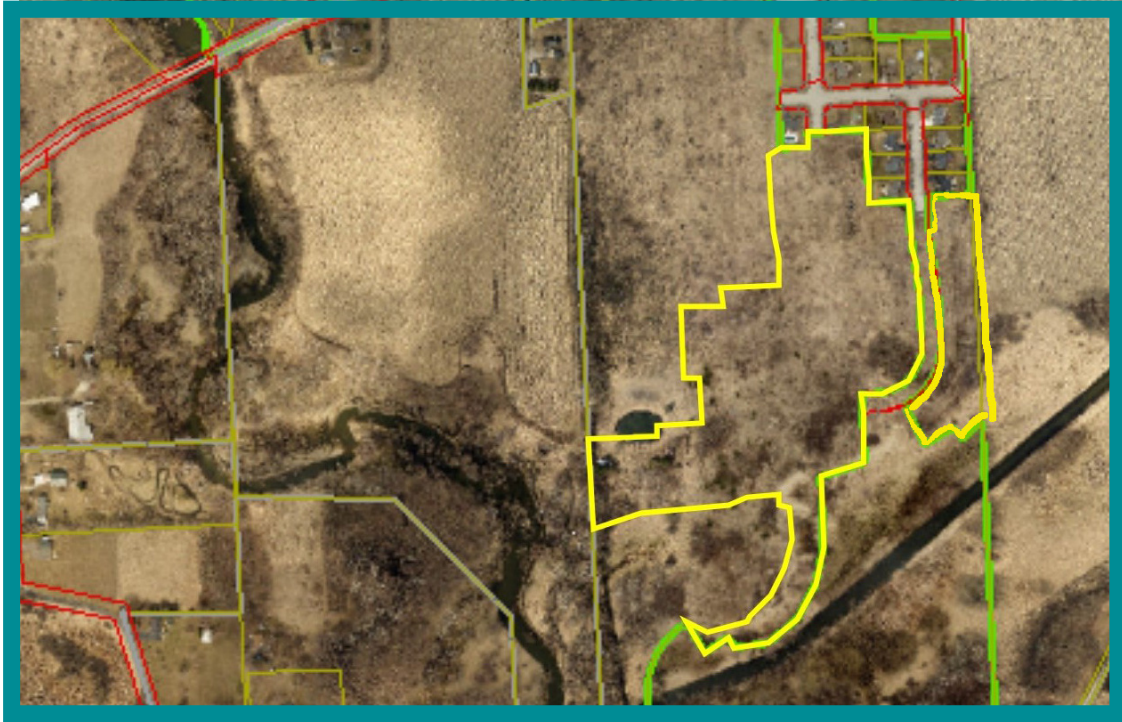


LAND

FOR SALE - 25.71 ACRES
106th Avenue, Pleasant Prairie, WI



- **Location:** 106th Avenue South of Wilmot Rd. (Hwy C)
- **Access:** 106th Avenue South of Wilmot Rd. (Hwy C)
- **Lot Sizes:** 12,500 sq. Ft. to 17,758 Sq. Ft.
- **Zoning:** Residential
- **Available For:** Single Family Residential
- **Project Set-Up:** Currently Phase I (13 lots) and Phase II (32 lots)
- **Utilities:** To Site
- **Sale Price:** \$1,285,000 (\$28,555 per lot)
- **Remarks:** Great development opportunity. Preliminary platted 45 lot subdivision. Location West of Lakeview Corporate Park and East of I-94 and Highway C interchange.

Above information is subject to verification and no liability for errors or omissions is assumed. Prices subject to change and listing may be withdrawn without notice.



CONTACT: Robert Elbrecht
Email: re@tristaterealty.com
Commercial and Industrial Real Estate
Licensed in Illinois and Wisconsin

Tri-State Realty, Inc. • (847) 360.1375 • Fax 847.360.9667
sales@tristaterealty.com • www.tristaterealty.com

FOR SALE

25.71 Acres Preliminary Platted 45 Lot Subdivision River Run at Heritage Valley Pleasant Prairie, WI

- **Location:** 106th Avenue South of Wilmot Road (Highway C)
- **Access:** 106th Avenue South of Wilmot Road (Highway C)
- **Lot Sizes:** 12,500 Sq. Ft. to 17,758 Sq. Ft.
- **Zoning:** Residential
- **Available For:** Single Family Residential
- **Project Set-Up:** Currently Phase I (13 lots) and Phase II (32 lots)
- **Utilities:** To Site
- **Sale Price:** \$1,285,000 (\$28,555 per lot)
- **Remarks:** Great development opportunity. Preliminary platted 45 lot subdivision. Location West of Lakeview Corporate Park and East of I-94 and Highway C interchange.

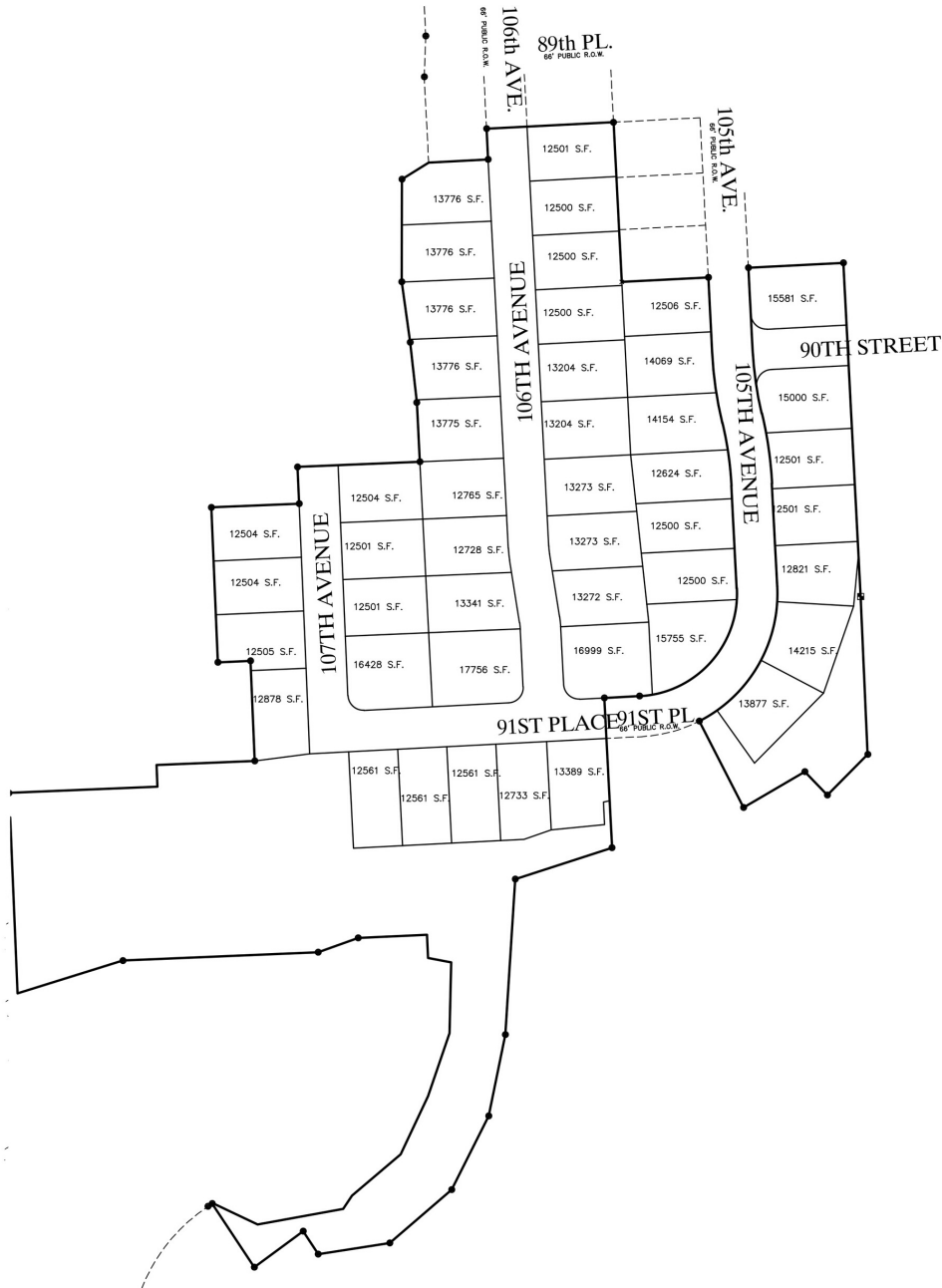
Above information is subject to verification and no liability for errors or omissions is assumed. Prices subject to change and listing may be withdrawn without notice.



CONTACT: Robert Elbrecht
Email: re@tristaterealty.com
Commercial and Industrial Real Estate
Licensed in Illinois and Wisconsin

Tri-State Realty, Inc. • (847) 360.1375 • Fax 847.360.9667
sales@tristaterealty.com • www.tristaterealty.com

LOT SIZES – 25.71 Acres
Preliminary Platted 45 lot Subdivision
River Run at Heritage Valley
PLEASANT PRAIRIE, WI



Above information is subject to verification and no liability for errors or omissions is assumed. Prices subject to change and listing may be withdrawn without notice.



CONTACT: Robert Elbrecht
Email: re@tristaterealty.com
Commercial and Industrial Real Estate
Licensed in Illinois and Wisconsin

Tri-State Realty, Inc. • (847) 360.1375 • Fax 847.360.9667
sales@tristaterealty.com • www.tristaterealty.com