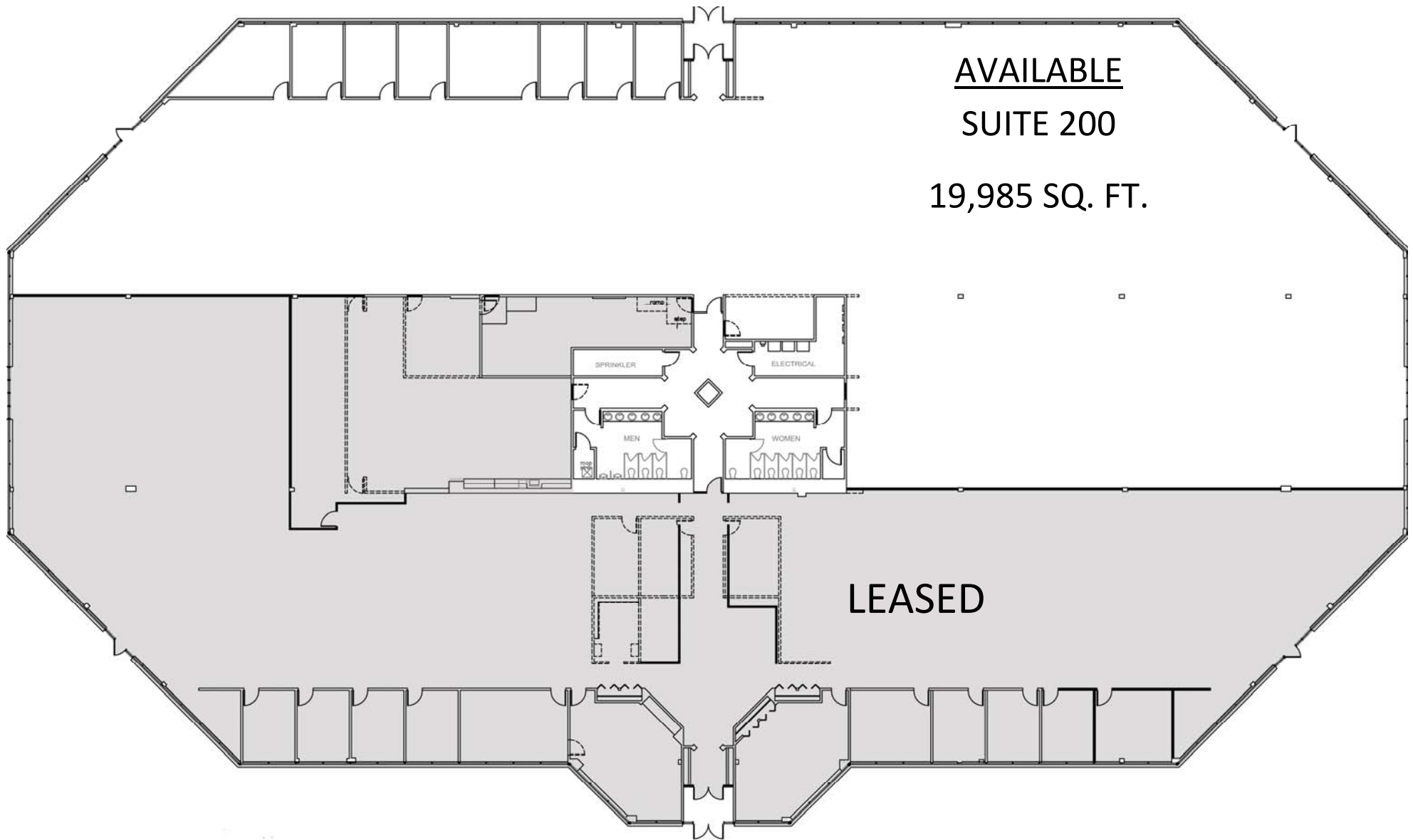


FLOOR PLAN - 19,585 Sq.Ft. 1275 Tri-State Parkway; Gurnee, IL



Contact: Robert Elbrecht
847.360.1375 x 11
re@tristaterealty.com

Commercial and Industrial Real Estate • Licensed in Illinois and Wisconsin

Tri-State Realty, Inc.

P.O. Box 502, Gurnee, Illinois 60031
847.360.1375 • Fax 847.360.9667

sales@tristaterealty.com • www.tristaterealty.com